



## REGIONAL SPECIALISED METEOROLOGICAL CENTRE-TROPICAL CYCLONES, NEW DELHI TROPICAL WEATHER OUTLOOK

### DEMS-RSMC TROPICAL CYCLONES NEW DELHI DATED 10.11.2023

**TROPICAL WEATHER OUTLOOK FOR NORTH INDIAN OCEAN (THE BAY OF BENGAL AND THE ARABIAN SEA) VALID FOR NEXT 168 HOURS ISSUED AT 0600 UTC OF 10.11.2023 BASED ON 0300 UTC OF 10.11.2023.**

#### BAY OF BENGAL:

A LOW PRESSURE AREA IS LIKELY TO FORM OVER SOUTHEAST AND ADJOINING SOUTHWEST BAY OF BENGAL AROUND 15TH NOVEMBER.

SCATTERED LOW AND MEDIUM CLOUDS WITH EMBEDDED ISOLATED MODERATE TO INTENSE CONVECTION LAY OVER SOUTH BAY OF BENGAL SOUTH OF LATTITUDE 12.0°N AND CENTRAL ADJOINING SOUTH ANDAMAN ISLANDS.

#### PROBABILITY OF CYCLOGENESIS (FORMATION OF DEPRESSION) DURING NEXT 168 HRS:

24 HOURS	24-48 HOURS	48-72 HOURS	72-96 HOURS	96-120 HOURS	120-144 HOURS	144-168 HOURS
NIL	NIL	NIL	NIL	NIL	NIL	NIL

#### ARABIAN SEA:

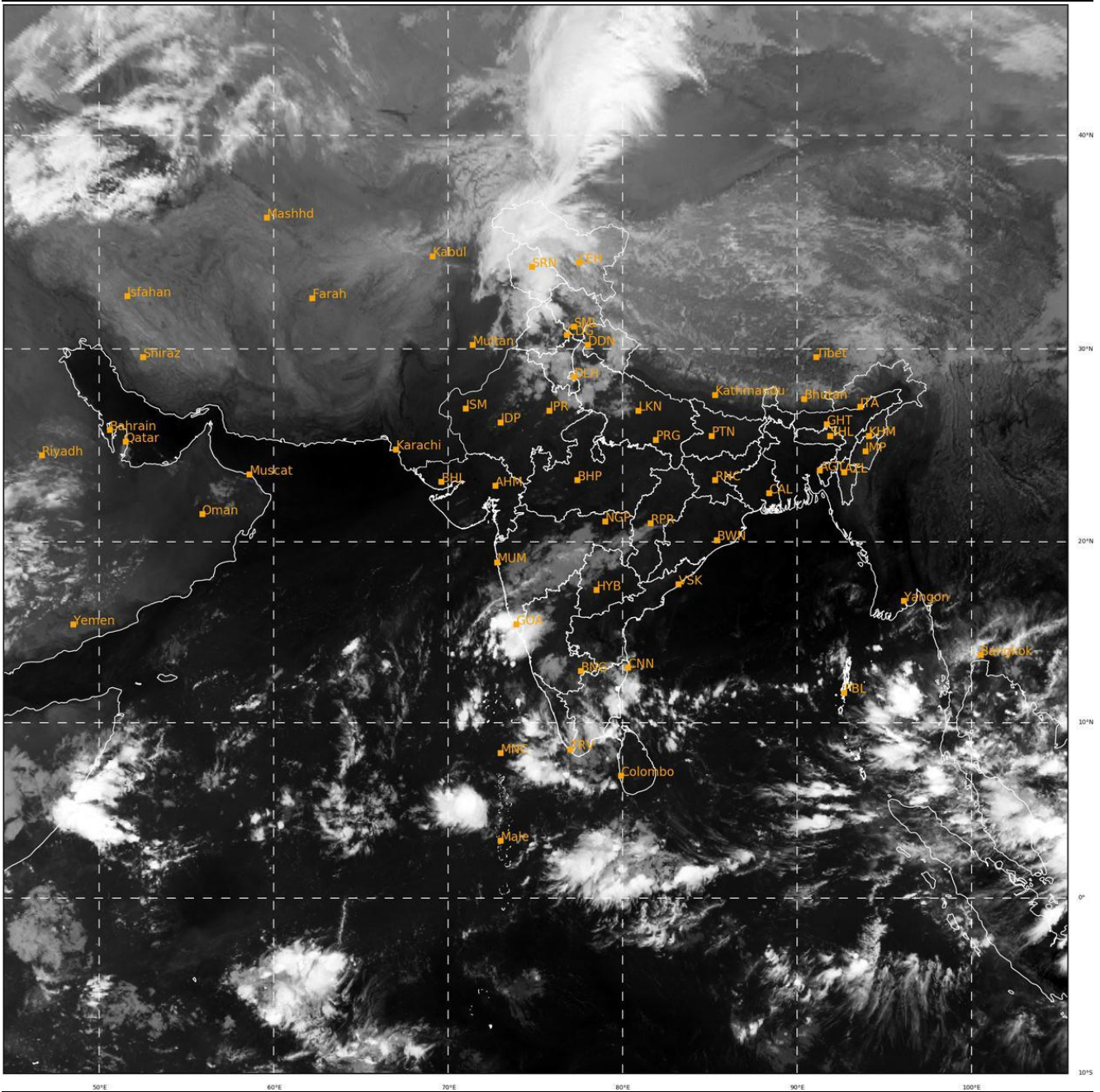
YESTERDAYS LOW PRESSURE AREA OVER EASTCENTRAL ARABIAN SEA HAS BECOME LESS MARKED AT 0300 UTC OF TODAY, THE 10<sup>TH</sup> NOVEMBER 2023. HOWEVER, THE ASSOCIATED CYCLONIC CIRCULATION NOW LIES OVER EASTCENTRAL & ADJOINING SOUTHEAST ARABIAN SEA EXTENDING UPTO 3.1 KM ABOVE MEAN SEA LEVEL.

SCATTERED LOW AND MEDIUM CLOUDS WITH EMBEDDED INTENSE TO VERY INTENSE CONVECTION LAY OVER EASTCENTRAL ARABIAN SEA ADJOINING GOA-NORTH KARNATAKA COASTS AND SOUTHWEST ARABIAN SEA. SCATTERED LOW AND MEDIUM CLOUDS WITH EMBEDDED MODERATE TO INTENSE CONVENTION LAY OVER SOUTHEAST ARABIAN SEA AND COMORIN AREA.

#### PROBABILITY OF CYCLOGENESIS (FORMATION OF DEPRESSION) DURING NEXT 168 HRS:

24 HOURS	24-48 HOURS	48-72 HOURS	72-96 HOURS	96-120 HOURS	120-144 HOURS	144-168 HOURS
NIL	NIL	NIL	NIL	NIL	NIL	NIL

Remarks: NIL



498

930

IMD, DELHI

Cloud distribution: (a) Isolated: <25%, Scattered:25-50%, Broken: 51-75%, Solid:>75%, Convection Intensity: (a) Weak: Cloud Top Temperature (CTT) >-25°C, (b) Moderate: CTT: - 25°C to -40°C, (c) Intense: CTT: - 41°C to -70°C and (d) Very Intense: : Less than -70°C  
PROBABILITY OF CYCLOGENESIS (FORMATION OF DEPRESSION):NIL: 0%, LOW: 1-33%, , MODERATE: 34-66% AND HIGH: 67-100%  
This is a guidance Bulletin for WMO/ESCAP Panel Member countries. Visit respective National websites for Country specific Bulletins